

MOTORE ZERO 260/91

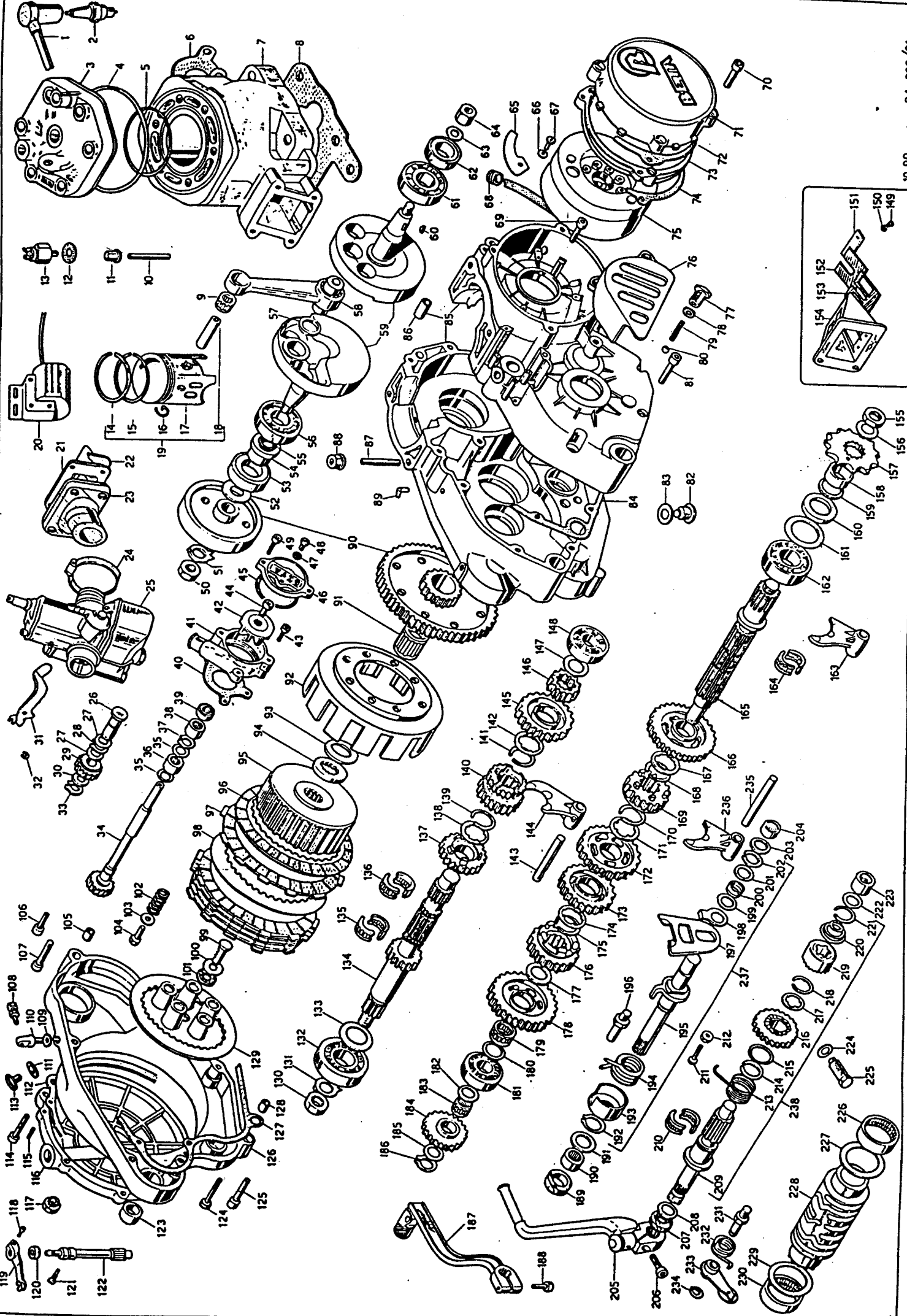


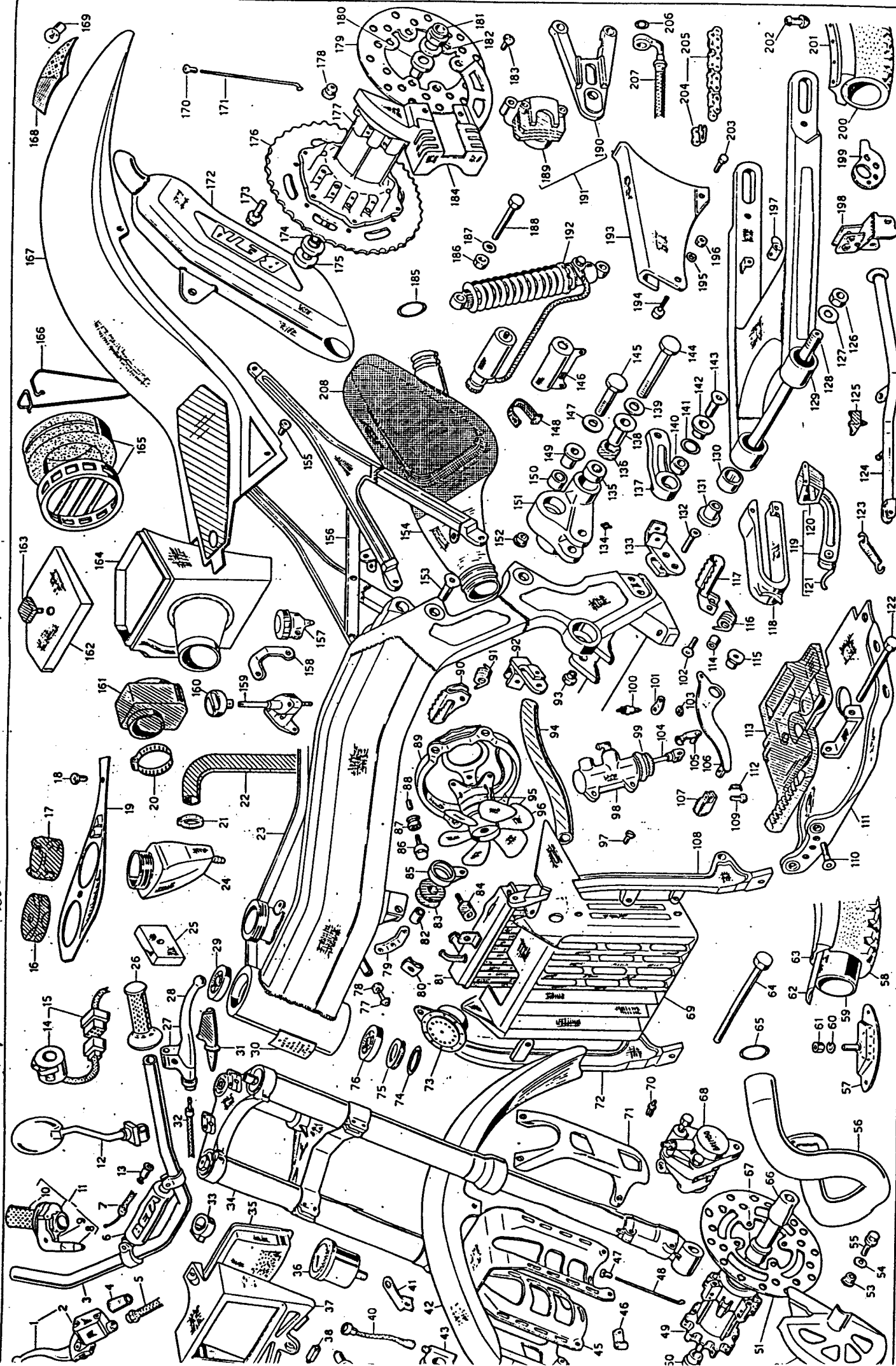
Table with columns Riga, Articolo, Descrizione, and Ricambi. Includes items like SPECIAL WASHER, LAYSHAFT, NEEDLE BEARING, and various gears.

Table with columns Riga, Articolo, Descrizione, and Ricambi. Includes items like DOWEL BOLT, NUT, PIPE HOSE, and various shafts.

Table with columns Riga, Articolo, Descrizione, and Ricambi. Includes items like SPARK PLUG PROTECTOR, CYLINDER D.76 ZERO, and various pistons.

PARTICOLARI NON FIGURANTI

- List of parts not shown in the diagrams: BEARBOX TR-34/CAMP., PRIMARY DRIVE ASSY, GASKET SET ZERO, KIT OIL SEAL ZERO.



Riga	Articolo	Descrizione
153	31.6399.0.00	SCREW 8.20
154	22.0411.0.00	MUFFLER ZERO
155	31.3071.0.00	SCREW 6.15
156	29.1102.0.00	REAR FRAME ZERO-91
157	28.0510.0.00	BRAKE OIL TANK TR-34/R
158	28.9725.0.00	OIL TANK BRACKET ZERO
159	27.8104.0.00	PETCOCK SWITCH ZERO
160	25.8852.0.53	PETCOCK SWITCH ZERO -RED-
161	22.1333.0.00	RUBBER SLEEVE ZERO
162	12.7318.0.52	FILTER COVER ZERO-91
163	16.2954.0.00	GROMMET
164	28.1269.0.52	AIR FILTER ZERO-91
165	15.2600.0.00	AIR FILTER ASSY. TR-34
166	22.3250.0.00	SPRING FOR FILTER B4
167	25.1954.0.52	REAR FENDER ZERO-91
168	15.0182.0.00	REAR LIGHT
169	21.1532.0.00	WARNING LIGHT BULB 12V-4W
170	23.1001.0.00	SPECIAL NIPPLES ZERO
171	27.2492.0.00	REAR SPOKE ZERO
172	28.9201.0.00	SILENCER ZERO-91
173	11.5451.0.00	BOLT 8.20
174	13.8556.0.00	RH REAR HUB SPACER ZERO-91
175	25.5492.0.00	REAR WHEEL AXLE ZERO
176	12.8935.0.00	REAR SPROCKET 2.43 5/8.1/4 ZERO
177	22.0794.0.53	REAR HUB ZERO
178	13.1713.0.00	NUT M8
179	13.3943.0.00	REAR BRAKE DISK TR-89
180	13.8557.0.00	LH REAR HUB SPACER ZERO-91
181	27.7121.0.00	REAR WHEEL NUT 16.1,25
182	31.3008.0.00	SCREW 5.10
183	12.8827.0.52	REAR DISK BRAKE COVER ZERO-91
184	10.6468.0.00	OIL SEAL 26.25.39.49.2,62
185	13.1901.0.00	SELF-BLOCKING NUT 10
187	27.5400.0.00	WASHER 10.22
188	11.6370.0.00	BOLT 10.65
189	25.0312.0.00	REAR BRAKE PLIERS TR-34/CAMP.
190	25.5733.0.00	PLATE
191	25.5000.0.00	PLATE
192	10.6407.0.00	SHOCK ABSORBER 1.300 ZERO
193	12.8486.0.58	CHAINGUARD ZERO-91
194	31.4851.0.00	SCREW 6.35
195	27.4200.0.00	WASHER 6.18
196	13.1301.0.00	WASHER 6.18
197	15.1430.0.00	CLAMP
198	28.9856.0.57	STAND BRACKET ZERO-91
199	29.1186.0.00	CHAIN TENSIONER TR-34/R
200	12.8149.0.00	TIRE 4.00.18 TUBELESS
201	12.4276.0.00	RIM 2.13.18 TUBELESS
202	31.1000.0.00	TUBELESS VALVE TR-34
203	11.4801.0.00	BOLT 8.16
204	22.1122.0.00	CONNECTING LINK 5/8.1/4
205	12.0674.0.00	CHAIN 5/8.1/4 P.100 ZERO
206	16.5051.0.00	GASKET 10.15.1 COPPER
207	29.0934.0.00	REAR BRAKE HOSE ZERO
208	12.8840.0.00	MUFFLER COVER ZERO-91
209	11.0560.0.00	TOOL BAG 250/350 GS
210	12.4303.0.00	SPARK PLUG KEY TR-240
211	12.4354.0.00	SCREW DRIVE TRIAL
212	13.3274.0.00	SWINGING ARM SPONSOR DECALS ZERO
213	13.3289.0.00	FRONT FENDER DECALS ZERO-91
214	13.3284.0.00	REAR FENDER DECALS ZERO-91
215	13.3284.0.00	REAR FENDER DECALS ZERO-91
216	27.0222.0.00	FRONT WHEEL ZERO
217	27.0447.0.00	REAR WHEEL ZERO

PARTICOLARI NON FIGURANTI

Riga	Articolo	Descrizione
77	31.6399.0.00	SCREW 8.25
78	13.1700.0.00	NUT 8.8
79	28.9726.0.00	HORN BRACKET ZERO
80	25.5806.0.00	FIXING PLATE
81	27.2344.0.00	RADIATOR ZERO-91
82	13.5433.0.00	SPACER
83	28.9191.0.00	SILENT BLOCK
84	28.9183.0.00	SILENT BLOCK ZERO
85	11.1966.0.00	CONNECTING ROD ZERO-91
86	11.4905.0.00	BOLT 6.20
87	28.9150.0.00	SILENT BLOCK
88	11.2850.0.00	FENDER BUSH
89	28.9801.0.52	ELECTRIC FAN BRACKET ZERO
90	25.3300.0.00	R/H FOOTREST TR-33
91	22.6601.0.00	FOOTREST SPRING
92	28.9923.0.00	RH FOOTREST BRACKET ZERO
93	11.2640.0.00	BUSH ZERO
94	29.1543.0.00	RADIATOR TUBE ZERO
95	14.0101.0.00	COMPL. ELECTRIC FAN ZERO-91
96	31.2153.0.00	FAN ZERO
97	31.2981.0.00	SCREW 5.12
98	25.9116.0.00	REAR BRAKE PUMP TR-34/CAMP.
99	16.3392.0.00	GROMMET FOR 25.9116
100	18.8700.0.00	STOP SWITCH TR-33
101	28.9526.0.00	SWITCH STOP BRACKET ZERO
102	11.5570.0.00	BOLT 8.45
103	13.2182.0.00	NUT
104	10.8401.0.00	REAR BRAKE ROD ZERO
105	28.9313.0.00	PUMP PIN W/SPRING
106	25.2805.0.00	BRAKE PEDAL
107	22.7005.0.00	FOOTREST HUB
108	29.1118.0.00	LH FRONT FRAME ZERO-91
109	25.5445.0.00	BRAKE PEDAL PIN TR-34
110	31.6394.0.00	SCREW 8.25
111	12.3213.0.00	BUMPER ZERO
112	22.6209.0.00	RET. BRAKE PEDAL SPRING B4
113	16.2331.0.00	BUMPER RUBBER
114	13.6533.0.00	SPACER B.12.17
115	11.2661.0.00	BRAKE LEVER BUSH ZERO
116	22.6202.0.00	FOOTREST SPRING
117	25.3305.0.00	L/H FOOTREST TR-33
118	29.1008.0.58	SLIDING BLOCK ZERO-91
119	25.2595.0.00	SLIDING BLOCK TR-34
120	16.2250.0.00	CHAIN TENS. BLOCK TR 34
121	22.8111.0.00	SPRING
122	11.5797.0.00	BOLT 8.140
123	22.4700.0.00	RETURNING STAND SPRING 125-RX
124	12.3993.0.57	STAND ZERO-91
125	14.2949.0.00	GROMMET
126	13.2950.0.00	S/ARM SPECIAL NUT 16.1,25
127	27.5630.0.00	WASHER 16
128	10.8146.0.00	S/ARM AXLE TR-34/R
129	15.4956.0.00	SWINGING ARM ZERO-91
130	11.2300.0.00	S/ARM NEEDLE BEARING 25.28.18
131	13.4920.0.00	SPACER TR-34
132	31.6394.0.00	SCREW 8.25
133	28.9924.0.00	LH FOOTREST BRACKET ZERO
134	18.8351.0.00	GREASE NIPLLE
135	11.2250.0.00	NEEDLE BEARING 15.21.22
136	10.5400.0.00	OIL SEAL 15.24.5
137	11.1973.0.00	CONNECTING ROD ZERO
138	13.4770.0.00	SPACER 10.15/26.42.5
139	27.5400.0.00	WASHER 10.22
140	28.9312.0.00	SPHERIC ARTICUL 14.28.13.5/19
141	10.6645.0.00	OIL SEAL 20.63.25.67.2,62
142	11.2884.0.00	BUSH
143	31.6397.0.00	SCREW 8.40
144	11.6390.0.00	BOLT 10.120
145	11.6374.0.00	BOLT 10.85
146	28.9911.0.00	SHOCK ABSORBER TANK BRACKET ZERO
147	27.5400.0.00	WASHER 10.22
148	14.4003.0.00	ELASTIC RUBBER TR-34/CAMP.
149	13.4740.0.00	SPACER 10.20/26.19,5
150	11.2285.0.00	NEEDLE BEARING 20.26.12
151	11.2038.0.00	CONNECTING ARM ZERO-91
152	11.2727.0.00	BUSH

Riga	Articolo	Descrizione
1	20.0300.0.00	FRONT BRAKE LEVER KIT
2	21.0229.0.00	FRONT BRAKE LEVER TR-32 FD
3	22.2045.0.00	HANDLBAR ZERO-91
4	16.3403.0.00	GROMMET
5	29.0918.0.00	FRONT BRAKE HOSE ZERO
6	16.2359.0.00	HANDLBAR RUBBER ZERO-91
7	29.1539.0.00	THROTTLE CABLE ZERO
8	20.0322.0.00	THROTTLE KIT
9	12.5376.0.00	THIST GRIP COVER TR-34
10	22.1860.0.00	GRIP D.24 TRIAL
11	12.5509.0.00	THIST GRIP
12	28.9292.0.00	REAR VIEW MIRROR TRIAL
13	16.3388.0.00	GROMMET
14	13.3464.0.00	SWITCH TR
15	19.0132.0.00	ELECTRIC EQUIPMENT ZERO
16	29.1051.0.00	TANK PLUG TRIAL
17	29.0140.0.00	RADIATOR CAP FOUR
18	31.3071.0.00	SCREW 6.15
19	12.8901.0.52	TANK COVER ZERO-91 -BLACK-
20	15.1530.0.00	CLAMP 48/68
21	15.1524.0.00	CLAMP 15/24
22	29.1173.0.00	UPPER RADIATOR TUBE ZERO-91
23	29.1116.0.00	FRONT FRAME ZERO-91
24	28.8583.0.00	LIQUID TANK ZERO-91
25	27.8801.0.00	MOTOPLAT REGULATOR-12
26	22.1801.0.00	GROMMET
27	21.0239.0.00	CLUTCH LEVER TR-34
28	21.2700.0.00	CLUTCH LEVER ONLY TR-33
29	12.9830.0.00	CONICAL BEARING 20.42.15
30	25.5747.0.00	PLATE
31	14.3384.0.00	GROMMET
32	29.1483.0.00	CLUTCH CABLE ZERO
33	25.2522.0.52	CLUTCH
34	15.0794.0.00	REVERSE FORK ZERO-91
35	16.4703.0.00	OTTICAL GROUP ZERO
36	12.0936.0.00	SPEEDOMETER TR-33
37	22.2266.0.52	HEADLIGHT HOLDER ZERO-91
38	21.1557.0.00	BULB 12V-10W
39	21.1564.0.00	BULB 12V-25/25W ZERO
40	29.2851.0.00	SPEEDOMETER CABLE ZERO
41	28.9723.0.00	SPEEDO-METER CONTACT ZERO
42	25.1517.0.52	FRONT FENDER ZERO-91
43	27.3246.0.00	SPEEDO-DRIVE ZERO
44	25.9893.0.52	RH FORK TUBE PROTECTION ZERO-91
45	28.9838.0.00	FENDER BRACKET ZERO
46	15.1460.0.00	CLIP W.RUBBER 10X15
47	23.1010.0.00	NIPPLES D.3
48	27.2418.0.00	FRONT SPOKE ZERO
49	22.0714.0.53	FRONT HUB ZERO
50	13.8556.0.00	RH REAR HUB SPACER ZERO-91
51	13.3941.0.00	FRONT BRAKE DISK ZERO
52	12.8826.0.52	FRONT DISK BRAKE COVER ZERO-91
53	13.6200.0.00	00
54	22.3198.0.00	CUP SPRING TR-89
55	31.3078.0.00	SCREW 6.20
56	29.1628.0.00	EXHAUST PIPE ZERO
57	15.1750.0.00	TIRE FASTENER
58	12.7940.0.00	TIRE 2.75.21 TR-125
59	12.1641.0.00	TIRE 2.75.21 MICHELIN
60	27.4800.0.00	WASHER 8
61	13.1700.0.00	NUT 8.8
62	15.3860.0.00	BEAD 21.25
63	12.4247.0.00	FRONT RIM ZERO
64	11.5797.0.00	BOLT 8.140
65	10.6710.0.00	OIL SEAL 52.07.57.31.2,62
66	25.5691.0.00	FRONT WHEEL AXLE ZERO
67	13.8537.0.00	LH REAR HUB SPACER ZERO-91
68	25.0311.0.00	FRONT BRAKE PLIERS TR-89
69	15.2350.0.52	RADIATOR COVER ZERO-91
70	12.4450.0.00	EXPANDER RIVET
71	25.9894.0.52	LH FORK TUBE PROTECTION ZERO-91
72	29.1117.0.00	RH FRONT FRAME ZERO-91
73	10.0980.0.00	HORN TR-33
74	10.6686.0.00	OIL SEAL 34.60.39.84.2,62
75	10.6739.0.00	F/FORK ALUMINIUM RING
76	12.9830.0.00	CONICAL BEARING 20.42.15